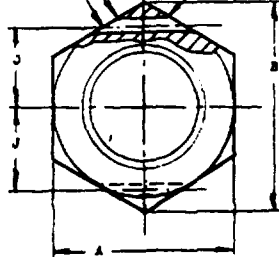


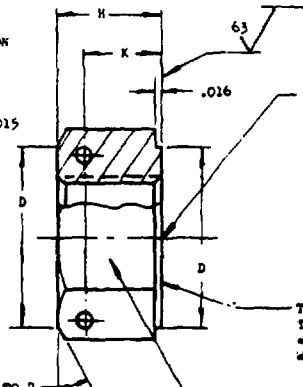
MS9882FED. SUP CLASS
5310

1 DIA THRU 2 HOLES
LOCATED WITHIN .005 OF TRUE POSITION
FOR .04 THRU .111 .010
FOR .12 AND LARGER

BREAK SHARP EDGES
OF HOLES .005 - .015



CHAM 30° TO D



63

CSK 90° TO C
BOTH SIDES
THD T UNF-38
PER MIL-S-8879

THD PD SHALL BE SQUARE
TO THIS SURFACE
WITHIN .005 FIR AND CONE
WITHIN .010 FIR

MARK PART NO AND
MFR IDENT PLT AS 478 CLASS C
(SEE NOTE 1)

PART NO.	THREAD T	A	B MIN	C DIA +.020 -.030	D DIA	H	J BASIC	K BASIC	L DIA +.004	APPROX WEIGHT LB/100
MS9882-04	.112-48	.243-.251	.277	.122	.250	.146	.094	.068	.031	.15
MS9882-06	.138-40	.305-.313	.347	.148	.312	.136	.115	.068	.047	.25
MS9882-08	.164-36	.336-.345	.383	.174	.344	.136	.135	.068	.047	.30
MS9882-09	.190-32	.367-.376	.419	.200	.375	.156	.150	.078	.047	.41
MS9882-10	.250-28	.431-.439	.491	.260	.438	.219	.185	.110	.047	.74
MS9882-11	.3125-24	.492-.502	.561	.322	.500	.266	.215	.133	.047	1.11
MS9882-12	.375-24	.553-.564	.631	.385	.562	.336	.245	.164	.047	1.60
MS9882-13	.4375-20	.679-.690	.775	.448	.688	.375	.300	.187	.070	2.87
MS9882-14	.500-20	.741-.752	.846	.510	.750	.436	.335	.219	.070	3.79
MS9882-15	.5625-16	.865-.877	.987	.572	.875	.484	.385	.262	.070	5.94
MS9882-16	.625-16	.928-.940	1.059	.635	.938	.547	.420	.300	.070	7.40
MS9882-17	.750-16	1.052-1.064	1.200	.760	1.062	.636	.490	.345	.070	10.56
MS9882-18	.875-14	1.239-1.252	1.414	.865	1.250	.766	.555	.370	.070	17.32
MS9882-19	1.000-12	1.427-1.440	1.628	1.010	1.438	.875	.655	.420	.070	26.55

1. MULTIPLE MARKING OF BAR STOCK IS PERMISSIBLE PROVIDED POSITIVE IDENTIFICATION IS SHOWN.
2. PARTS SHALL BE MARKED BEFORE THREADING. DASH NUMBERS MAY APPEAR ON ADJACENT FLATS.
3. TRUE POSITION TOLERANCES SPECIFIED ARE FOR MAX MATERIAL CONDITION.
4. MAT. LAL: STEEL AMS 6122.
5. HARDNESS: ROCKWELL C26-32.
6. FINISH: CHROMIUM PLATE PER AMS 7400. DIMENSIONS SPECIFIED ARE AFTER PLATING.
7. SURFACE TEXTURE: PER MIL-STD-1992, UNLESS OTHERWISE SPECIFIED SURFACES TO BE 125 MICROINCHES MAXIMUM RAZ. SURF.
8. MAGNETIC PARTICLE INSPECTION PER MIL-STD-2000 AFTER FINISHING.
9. BREAK SHARP EDGES .005 - .015 UNLESS OTHERWISE SPECIFIED.
10. DIMENSIONS IN INCHES. UNLESS OTHERWISE SPECIFIED, TOLERANCES: LINEAR DIMENSIONS: .010, ANGULAR DIMENSIONS: 5°.
11. DO NOT USE UNASSIGNED PART NUMBERS.

CERTAIN PROVISIONS (LIMITS OF SIZE FOR CROSS-SECTION DIMENSIONS) OF THIS STANDARD AND THE SUBJECT OF INTERNATIONAL STANDARDIZATION AGREEMENT AND AIR STD 17/2. WHEN PROVISION OR CIRCUMSTANCES OF THIS STANDARD IS PROPOSED, THE DEPARTMENT'S CONCERN WILL BE TO IMPROVE THE QUALITY OF THE STANDARD STANDARDIZATION OFFICE SO THAT APPROPRIATE ACTION MAY BE TAKEN IN RESPECTING THE INTERNATIONAL AGREEMENT CONCERNED.

AS & AMS ARE SOCIETY OF AUTOMOTIVE ENGINEERS, INC. PUBLICATIONS.

THIS STANDARD WAS DEVELOPED COLLABORATIVELY WITH THE MILITARY SERVICES BY THE USE AIRCRAFT DIVISION DIVISION.

P.A.
Navy - 10
Army - 10

INTERNATIONAL
STANDARD

TITLE

MIL. PLATE, HEX - BATTLED, AMS 6122, CHROMIUM PLATE
MIL-STD-883C

MILITARY STANDARD

MS9882

PROCUREMENT SPECIFICATION

SUPERSEDES:

SHEET 1 OF 1

U.S. GOVERNMENT PRINTING OFFICE: 1968-30-1328 (33)

Review activities:
NMP - 82, 85

This military standard is approved by the Department of Defense and is mandatory on all activities. Selection for all new engineering and design applications and for repetitive use shall be made from this document.

APPROVED 27 May 66 REVISED

DD FORM 672-1 (Coordinated)

PREVIOUS EDITIONS OF THIS FORM ARE OBSOLETE.