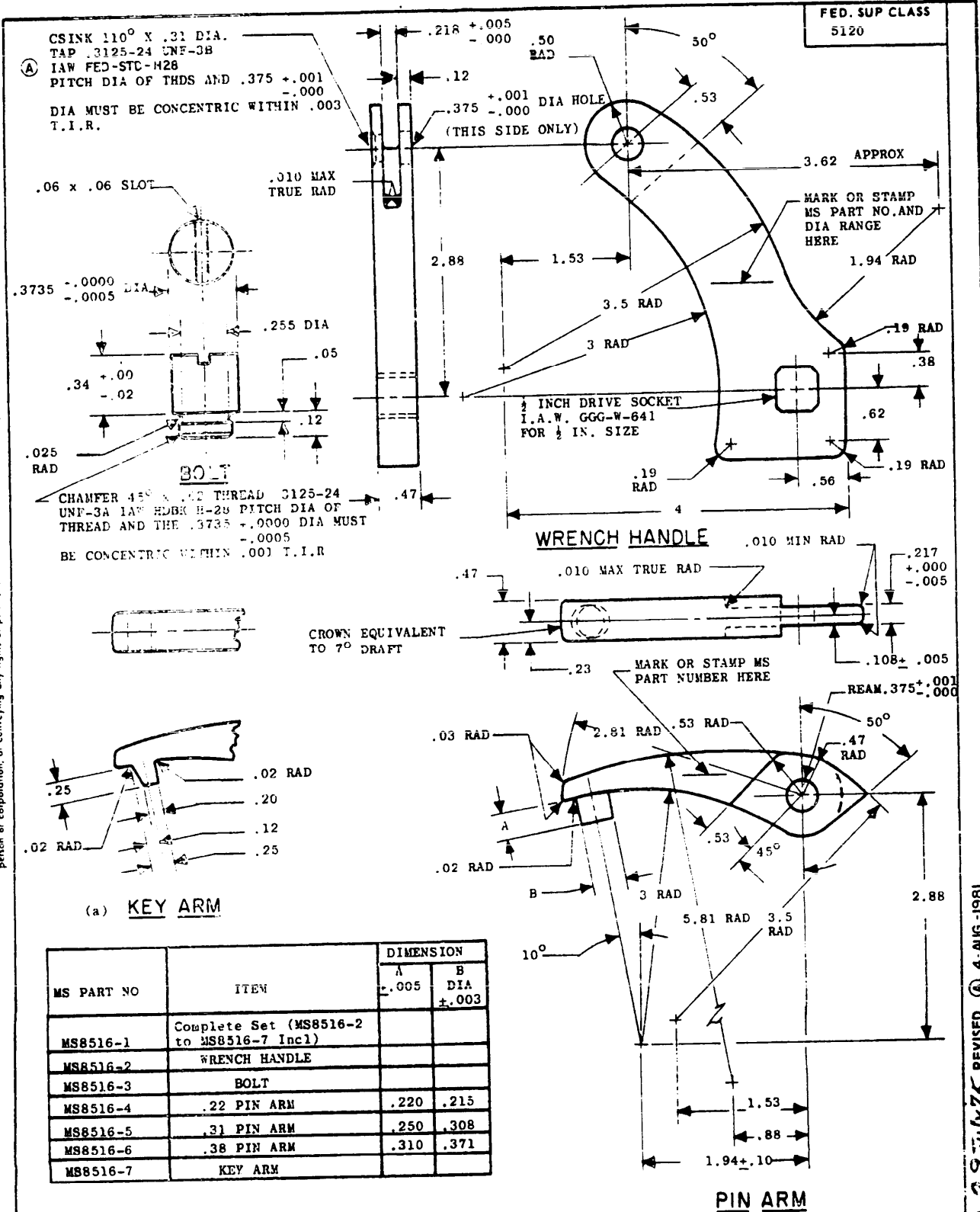


NOTICE:—When Government drawings, specifications, or other data are used for any purpose other than in connection with a definitely related Government procurement operation the United States Government there by incurs no responsibility nor any obligation whatsoever; and the fact that the Government may have furnished, furnished, or in any way supplied the said drawings, specifications, or other data is not to be regarded by implication or otherwise as in any manner licensing the holder or any other person or corporation, or conveying any rights or permission to manufacture, use, or sell any patented invention that may in any way be related thereto.



MS PART NO	ITEM	DIMENSION	
		A ±.005	B DIA ±.003
MS8516-1	Complete Set (MS8516-2 to MS8516-7 Incl)		
MS8516-2	WRENCH HANDLE		
MS8516-3	BOLT		
MS8516-4	.22 PIN ARM	.220	.215
MS8516-5	.31 PIN ARM	.250	.308
MS8516-6	.38 PIN ARM	.310	.371
MS8516-7	KEY ARM		

(a) DIMENSIONS OF THIS PART THAT ARE NOT SHOWN ARE THE SAME AS FOR THE PIN ARM.
 MATERIAL: STEEL, 1/4" SPEC SAE 4130
 SURFACE FINISH: 45 TO 55 ON ROCKWELL "C" SCALE.
 FINISH: SANDBLAST AND APPLY BLACK OXIDE, OR PLATE WITH CHROMIUM OR NICKEL, TO 0.001 MIN THICKNESS.
 BREAK SHARP EDGES .010 MAX; REMOVE BURRS.
 DIMENSIONS IN INCHES. UNLESS OTHERWISE SPECIFIED, TOLERANCES: DECIMALS + .01, ANGLES +1/2°.

P.A. AIR FORCE - 99 Other Cust	TITLE WRENCH-1/2 INCH SQUARE DRIVE ADJUSTABLE SPANNER (3.5 TO 6 INCHES DIA)	MILITARY STANDARD	
		MS8516	
PROCUREMENT SPECIFICATION NONE	SUPERSEDES: AN8516	SHEET	OF 1

This drawing is prepared by the Department of Defense and is the property of the Department of Defense. It is to be used for the manufacture of parts for repair of aircraft only. No other use is permitted without the express approval of the Department of Defense.

APPROVED 29 July 75 REVISED 4-AUG-1981