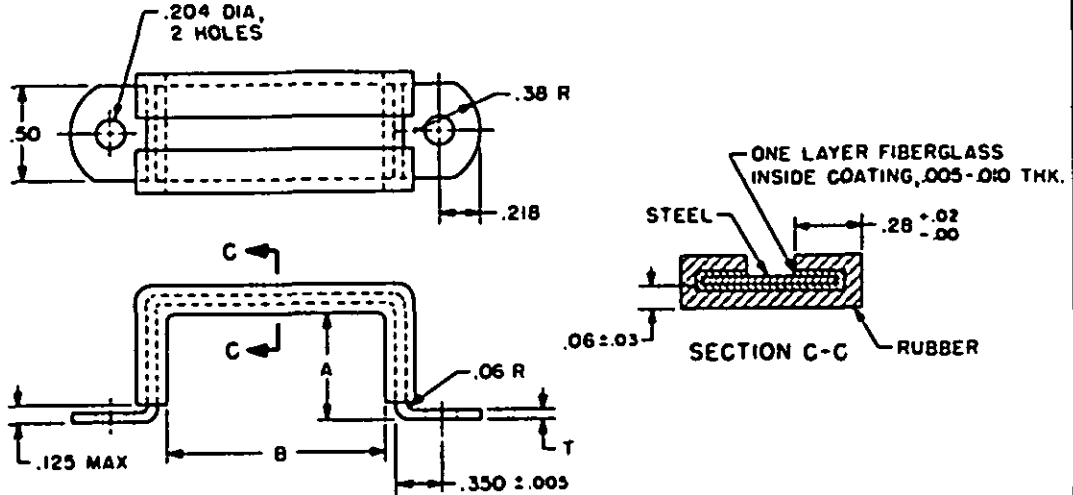


FED. SUP CLASS
5340



NOTES:

- (A) 1. **MATERIAL:** Base-Steel, carbon, in accordance with QQ-S-698, Steel Nos. 1009, 1015 or 1020, condition hot rolled or cold rolled, temper no. 4 or 5.
Cushion-Inner layer: Fiberglass, #128 weave, bias (45°) cut in one strip and prime coat frictioned with rubber in accordance with MIL-R-3065, Grade T4603A₆B₃F₃.
Outer layer: Rubber, in accordance with MIL-R-3065, Grade T4705A₆B₃F₃.
- 2. **PROTECTIVE COATING:** Steel-Cadmium plated in accordance with QQ-P-416, Type II, Class 2.
- 3. **DIMENSIONS:** All dimensions are in inches. Tolerance ±.015 unless otherwise specified.
- 4. **PART NUMBER:** The MS part number consists of the MS number, plus the dash number.
Example: MS63044-1.
- 5. Base shall be free of burrs and sharp edges.
- 6. Referenced documents shall be of the issue in effect on date of invitations for bid.
- 7. For design feature purposes, this standard takes precedence over procurement documents referenced herein.
- 8. Cushion design is protected by patent pending number 486139, dated 4 February 1955. The Government does not have a royalty free license.

This military standard is mandatory for use by all Departments and Agencies of the Department of Defense. Selection for all new engineering and design applications and for repetitive use shall be made from this document.

REVISION: IS, CS
(SERIAL, M, SH)

(A) For changes see sheet 1.

P.A. 6C Other Code YD	TITLE STRAP, RETAINING, RECTANGULAR, CUSHIONED	MILITARY STANDARD
PROCUREMENT SPECIFICATION NONE	SUPERSEDES	MS63044
		SHEET 1 OF 2 (A)

APPROVED 16 MAR 1960 REVISED (A) 25 AUG 1969

FED. SUP CLASS
5340

A HEIGHT	.25	.38	.50	.62	.75	.88	1.00	1.12	1.25	1.38
T THICKNESS	.040	.040	.040	.040	.040	.051	.051	.051	.051	.051
B LENGTH	DASH NUMBER									
.38	1									
.50	2									
.62	3	11								
.75	4	12	21							
.88	5	13	22	34						
1.00	6	14	23	35	48					
1.12	7	15	24	36	49					
1.25	8	16	25	37	50	65				
1.38	9	17	26	38	51	66				
1.50	10	18	27	39	52	67	82			
1.62		19	28	40	53	68	83			
1.75		20	29	41	54	69	84	99		
1.88			30	42	55	70	85	100		
2.00			31	43	56	71	86	101	116	133
2.12			32	44	57	72	87	102	117	134
2.25			33	45	58	73	88	103	118	135
2.38				46	59	74	89	104	119	136
2.50				47	60	75	90	105	120	137
2.62					61	76	91	106	121	138
2.75					62	77	92	107	122	139
2.88					63	78	93	108	123	140
3.00					64	79	94	109	124	141
3.12						80	95	110	125	142
3.25						81	96	111	126	143
3.38							97	112	127	144
3.50							98	113	128	145
3.62								114	129	146
3.75								115	130	147
3.88									131	148
4.00									132	149
4.12										150

A HEIGHT	1.50	1.62	1.75	1.88	2.00	2.12	2.25	2.38	2.50	2.75
T THICKNESS	.064	.064	.064	.064	.064	.064	.064	.064	.064	.064
B LENGTH	DASH NUMBER									
2.00	151	169	187							
2.12	152	170	188							
2.25	153	171	189	208						
2.38	154	172	190	209	227					
2.50	155	173	191	210	228	245				
2.62	156	174	192	211	229	246				
2.75	157	175	193	212	230	247	262	278		
2.88	158	176	194	213	231	248	263	279	295	
3.00	159	177	195	214	232	249	264	280	296	311
3.12	160	178	196	215	233	250	265	281	297	312
3.25	161	179	197	216	234	251	266	282	298	313
3.38	162	180	198	217	235	252	267	283	299	314
3.50	163	181	199	218	236	253	268	284	300	315
3.62	164	182	200	219	237	254	269	285	301	316
3.75	165	183	201	220	238	255	270	286	302	317
3.88	166	184	202	221	239	256	271	287	303	318
4.00	167	185	203	222	240	257	272	288	304	319
4.12	168	186	204	223	241	258	273	289	305	320
4.25			205	224	242	259	274	290	306	321
4.38			206	225	243	260	275	291	307	322
4.50			207	226	244	261	276	292	308	323
4.62							277	293	309	324
4.75								294	310	325
4.88										326
5.00										327

This military standard is mandatory for use by all Departments and Agencies of the Department of Defense. Selection for all new engineering and design applications and for repetitive use shall be made from this document.

REVIEWER: I.S., OS
USER: EL, MI, SH

APPROVED 16 MAR 1960 REVISED (A) FOR CHANGES SEE SHEET 1.

P.A. VC Other Cont YD	TITLE STRAP, RETAINING, RECTANGULAR, CUSHIONED	MILITARY STANDARD MS63044
PROCUREMENT SPECIFICATION NONE	SUPERSEDES:	SHEET 2 OF