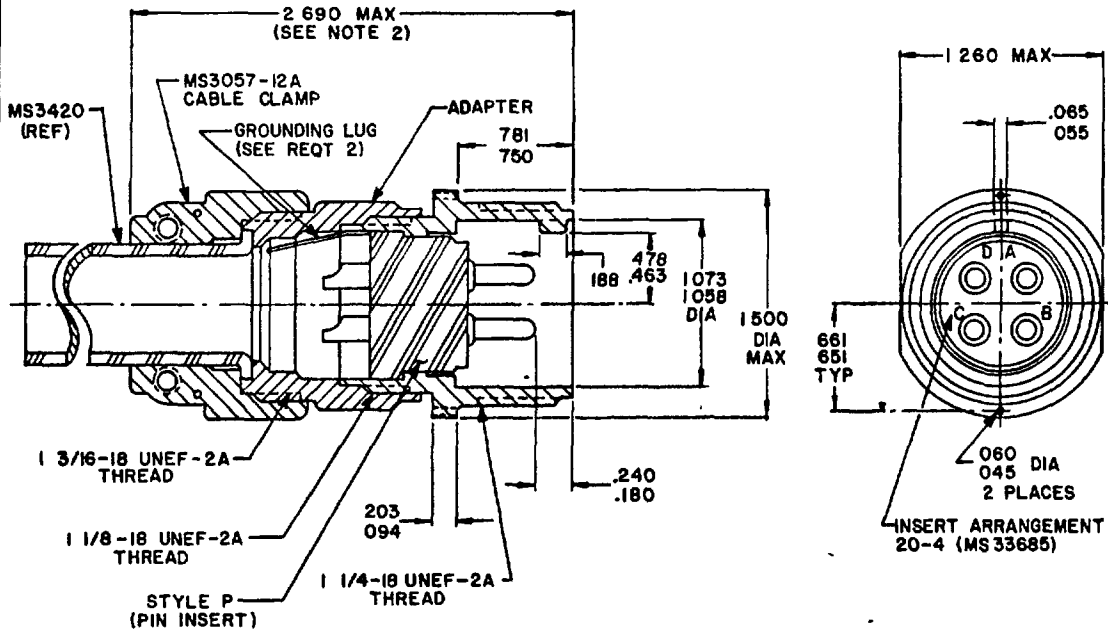


FED SUP CLASS  
5935

REVIEW ACTIVITY NAVY - EC

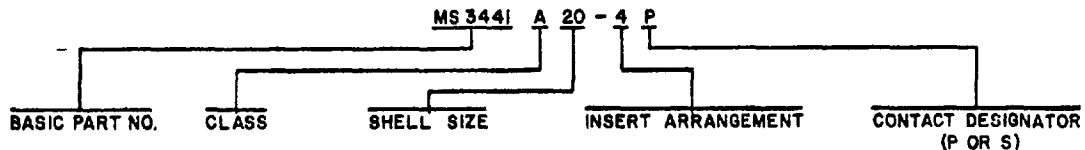
**NOTES**

1. DIMENSIONS IN INCHES, DIMENSIONING AND TOLERANCING IN ACCORDANCE WITH ANSI 14.5-1973.
2. DIMENSIONS BASED ON FULLY TIGHTENED ACCESSORIES.
3. CONNECTOR SHALL MATE WITH MS3436-20-4S.

**REQUIREMENTS**

1. FINISH  
SHELL AND ACCESSORIES - OLIVE DRAB CHROMATE COATING OVER CADMIUM PLATE
2. THE GROUNDING LUG SHALL BE INSTALLED ADJACENT TO PIN 'D'
3. CONNECTOR SHALL MEET REQUIREMENTS OF MIL-C-5016.
4. CABLE CLAMP SHALL CONFORM TO MS3057-12A.

EXAMPLE OF PART NUMBER: MS3441A20-4P



P A. NAVY - AS Other Cust	TITLE <b>CONNECTOR, PLUG, ELECTRIC, UTILITY</b>	<b>MILITARY STANDARD</b>	
		<b>MS3441 (NAVY)</b>	
PROCUREMENT SPECIFICATION MIL-C-5015	SUPERSEDES	SHEET	OF

DD FORM 13 MAR 72 672-1 (Limited coordination)

PREVIOUS EDITIONS OF THIS FORM ARE OBSOLETE.

PROJECT NO. 5935-N977-3 PLATE NO. 23071

REVISED  
APPROVED 7 Oct 1974

<b>STANDARDIZATION DOCUMENT IMPROVEMENT PROPOSAL</b>		<b>OMB Approval No. 22-R255</b>	
<p><b>INSTRUCTIONS:</b> The purpose of this form is to solicit beneficial comments which will help achieve procurement of suitable products at reasonable cost and minimum delay, or will otherwise enhance use of the document. DoD contractors, government activities, or manufacturers/vendors who are prospective suppliers of the product are invited to submit comments to the government. Fold on lines on reverse side, staple in corner, and send to preparing activity. Comments submitted on this form do not constitute or imply authorization to waive any portion of the referenced document(s) or to amend contractual requirements. Attach any pertinent data which may be of use in improving this document. If there are additional papers, attach to form and place both in an envelope addressed to preparing activity.</p>			
DOCUMENT IDENTIFIER AND TITLE <b>MS3441 (NAVY) CONNECTOR, PLUG, ELECTRIC, UTILITY</b>			
NAME OF ORGANIZATION AND ADDRESS		CONTRACT NUMBER	
		MATERIAL PROCURED UNDER A <input type="checkbox"/> DIRECT GOVERNMENT CONTRACT <input type="checkbox"/> SUBCONTRACT	
<p>1. HAS ANY PART OF THE DOCUMENT CREATED PROBLEMS OR REQUIRED INTERPRETATION IN PROCUREMENT USE?</p> <p>A. GIVE PARAGRAPH NUMBER AND WORDING.</p> <p>B. RECOMMENDATIONS FOR CORRECTING THE DEFICIENCIES</p>			
2. COMMENTS ON ANY DOCUMENT REQUIREMENT CONSIDERED TOO RIGID			
<p>3. IS THE DOCUMENT RESTRICTIVE?</p> <p><input type="checkbox"/> YES    <input type="checkbox"/> NO (If "Yes", in what way?)</p>			
4. REMARKS			
SUBMITTED BY (Printed or typed name and address - Optional)		TELEPHONE NO	
		DATE	

DD FORM 1426  
1 JAN 72

REPLACES EDITION OF 1 JAN 66 WHICH MAY BE USED

FOLD

DEPARTMENT OF THE NAVY  
Naval Air Engineering Center  
Philadelphia, PA 19112

OFFICIAL BUSINESS

POSTAGE AND FEES PAID  
DEPARTMENT OF THE NAVY  
DOD 316



Engineering Specifications and Standards Department (Code ES)  
Naval Air Engineering Center  
Philadelphia, PA 19112

FOLD