

INCH-POUND

MIL-DTL-43649C (GL)

25 June 1997

SUPERSEDING

MIL-P-43649B (GL)

28 June 1991

DETAIL SPECIFICATION

PARACHUTES, CARGO, 12, 26, AND 34 FOOT DIAMETER

This specification is approved for use by the Natick Research, Development and Engineering Center, Department of the Army, and is available for use by all Departments and Agencies of the Department of Defense.

1. SCOPE

1.1 Scope. This specification covers the requirements for three cargo parachute assemblies and the separate components thereof.

1.2 Classification.

1.2.1 Size. The cargo parachutes shall be of the following sizes as specified (see 6.2).

Size - 12-foot diameter

Size - 26-foot diameter

Size - 34-foot diameter

1.2.2 Components. The following cargo parachute components may be procured separately when specified (see 6.2).

Beneficial comments (recommendations, additions, deletions) and any pertinent data which may be of use in improving this document should be addressed to: U.S. Army Natick Research, Development, and Engineering Center, Attn: SSCNC-UTE, Natick, MA 01760-5017 by using the self-addressed Standardization Document Improvement Proposal (DD Form 1426) appearing at the end of this document or by letter.

MIL-DTL-43649C (GL)

For 12-foot diameter cargo parachute:

- Canopy assembly
- Deployment bag
- Static line

For 26-foot diameter cargo parachute:

- Canopy assembly
- Deployment bag
- Static line

For 34-foot diameter cargo parachute:

- Canopy assembly
- Pack
- Drogue
- Static line

2. APPLICABLE DOCUMENTS

2.1 General. The documents listed in this section are specified in sections 3 and 4 of this specification. This section does not include documents cited in other sections of this specification or recommended for additional information or as examples. While every effort has been made to ensure the completeness of this list, document users are cautioned that they must meet all specified requirements documents cited in sections 3 and 4 of this specification, whether or not they are listed.

2.2 Government documents.

2.2.1 Specifications and standards. The following specifications and standards form a part of this document to the extent specified herein. Unless otherwise specified, the issues of these documents are those listed in the issue of the Department of Defense Index of Specifications and Standards (DoDISS) and supplement thereto, cited in the solicitation (see 6.2).

SPECIFICATIONS

FEDERAL

V-T-295 - Thread, Nylon

STANDARDS

FEDERAL

FED-STD-191 - Textile Test Methods

FED-STD-751 - Stitches, Seams and Stitchings

MIL-DTL-43649C (GL)

(Unless otherwise indicated, copies of the above specifications and standards are available from the Standardization Document Order Desk, 700 Robbins Avenue, Building 4D, Philadelphia, PA 19111-5094).

2.2.2 Drawings. The following Government drawings form a part of this document to the extent specified herein. Unless otherwise specified, the issues are those cited in the solicitation.

DRAWINGS

U.S. ARMY NATICK RESEARCH, DEVELOPMENT AND ENGINEERING CENTER

11-1-216	- Parachute, Cargo, Ringslot; 12 Ft. Diameter
11-1-217	- Canopy Assembly; 12 Ft. Dia. Ringslot Cargo Parachute
11-1-218	- Deployment Bag; 12 Ft. Diameter Cargo Parachute
11-1-219	- Static Line; Cargo Parachute
11-1-507	- Canopy Details
11-1-508	- Riser; Cargo Parachute
11-1-509	- Panels, Canopy
11-1-555	- Parachute, Cargo, Ringslot; 26 Ft. Diameter
11-1-556	- Canopy Assembly; 26 Ft. Diameter Ringslot Cargo Parachute
11-1-557	- Canopy Details
11-1-558	- Canopy Sections
11-1-559	- Riser; Cargo Parachute
11-1-560	- Panels, Canopy
11-1-578	- Parachute, Cargo, 34 Ft. Nominal Diameter, Cotton, Bi-Conical Annular Ring, 500 Lb Capacity
11-1-579	- Canopy Assembly; 34 Ft. Diameter Bi-Conical, G-14 Cargo Parachute
11-1-580	- Canopy, Details and Sections
11-1-581	- Riser, 34 Ft. Diameter Bi-Conical Cargo Parachute
11-1-3954	- Deployment Bag Assembly; 26 Ft. HV Parachute
11-1-3955	- Body Assembly
11-1-3956	- Flap, Assembly
11-1-3960	- Loop Assembly

AIR FORCE

51C6166	- Line, Static, Parachute
51D6553	- Pack, Cargo Parachute
61D2459	- Drogue, Parachute Static Line

(Copies of drawings are available from the U.S. Army Natick Research, Development and Engineering Center, Attn: AMSSC-S-IMI, Natick, MA 01760-5017).

MIL-DTL-43649C (GL)

2.3 Order of precedence. In the event of a conflict between the text of this document and the references cited herein, the text of this document takes precedence. Nothing in this document, however, supersedes applicable laws and regulations unless a specific exemption has been obtained.

3. REQUIREMENTS

3.1 First article. When specified (see 6.2), a sample shall be subjected to first article inspection in accordance with 4.2.

3.2 Materials. Materials shall be in accordance with the requirements specified on the applicable drawings (see 2.2.2), to subsidiary documents applicable thereto, and as specified herein.

3.2.1 Recycled, recovered, or environmentally preferable materials. Recycled, recovered, or environmentally preferable materials should be used to the maximum extent possible provided that the material meets or exceeds the operational requirements, and promotes economically advantageous life cycle costs.

3.3 Construction and assembly. The end item (see 6.2) shall conform to the requirements of this specification and to designs, details, and dimensions shown or specified on the applicable drawings.

3.3.1 Stitching. All stitching shall be in accordance with FED-STD-751. Broken threads, skipped and missing stitches occurring in type 301 or 401 stitching shall be overstitched not less than 1 inch past the ends of the defect. Broken threads and skipped stitches occurring in type 308 stitching shall be overstitched not less than three stitches past the ends of the defect. Except where otherwise specified, ends of all type 301 or 401 stitching shall be backstitched not less than 1/2 inch, unless ends are turned under in a hem or held down by other stitching. Thread tensions shall be maintained so that loose stitching does not occur and the lock will be imbedded in the materials sewed. Thread ends shall be trimmed throughout. Runoffs shall be restitched to conform to the specified stitch pattern.

3.3.1.1 Stitching, automatic machinery. Stitching patterns produced by automatic machines may be utilized in lieu of those specified, providing seam strength efficiency and function are equal to, or better than, the specified pattern, and upon approval by the procuring activity. Certification of equivalency, supported by engineering data, may be required.

3.3.1.2 Darns. Holes, cuts, or tears in the canopy, deployment bag or pack cloths shall be darned with thread, types I, II or III, class A, size A, color Camouflage Green 483 of V-T-295. Damaged areas of the cloth which can be darned shall not exceed 1/4 inch in diameter for holes (except drill holes) and 1/2 inch in length for cuts or tears in any direction. Fourteen darns are allowed per canopy, four per deployment bag, and four per pack.

MIL-DTL-43649C (GL)

3.3.2 Canopy permeability. The air permeability of the cloth of the completed canopy shall not exceed the specified lower limit by more than 10 percent nor the specified upper limit by more than 10 percent when tested in accordance with 4.3.5.

3.3.3 Canopy patching. One sewn patch is allowed per canopy. The maximum damaged area that can be patched is an area 7 inches by 7 inches. The patch shall be located no closer than 1 inch from a radial seam, edge reinforcement, or lower lateral band. The patch shall be square or rectangular in shape and conform to the patching procedure in 3.3.4.

3.3.4 Patching procedure.

a. Place the repairable item on a repair table, smooth the fabric around the damaged area, and secure the item to the table with pushpins. Do not pin the damaged area.

b. Using an authorized marking aid of contrasting color, mark a square or rectangle around the area to be patched and insure that one side of the marked square or rectangle is parallel to the warp or filling of the fabric.

c. Cut the damaged area fabric along the lines made in (b) above. Further cut the fabric diagonally at each corner to allow a 1/2-inch foldback in the raw edges.

d. Make a 1/2-inch foldback on each raw edge. Pin and baste each foldback to complete the prepared hole.

e. Using the same type material as in the original construction, mark and cut a patch 2-1/2 inches wider and longer than the inside measurements of the prepared hole. Insure that the patch material is marked and cut along the warp or filling of the fabric.

f. Center the patch material over the prepared hole and insure the warp or filling of the patch material matches the warp or filling of the fabric being patched. Pin the patched material in position.

g. Make a 1/2-inch fold under on each edge of the patch material and baste the patch to the prepared area.

h. Remove the pushpins securing the item to the repair table and secure the patch by machine stitching, using the applicable details in figure 1. The stitching should be accomplished with thread that is contrasting in color to the fabric. Thread shall be V-T-295, size E nylon, types

MIL-DTL-43649C (GL)

I, II or III, class A. The stitching shall be type 301, using 7 to 11 stitches per inch in accordance with FED-STD-751. Backstitch ends of stitching 1/2 inch minimum or overlap the ends of stitching 2 inches minimum or 4 inches maximum.

3.4 Workmanship. The workmanship shall conform to the quality of product established by this specification.

4. VERIFICATION

4.1 Classification of inspections. The inspection requirements specified herein are classified as follows:

- a. First article inspection (see 4.2)
- b. Conformance inspection (see 4.3)

4.2 First article inspection. When a first article inspection is required (see 3.1 and 6.2) it shall be examined in accordance with 4.3.

4.3 Conformance inspection. Conformance inspection shall include the examination of 4.3.1, 4.3.2, 4.3.3 and 4.3.4 and the testing of 4.3.5. Sampling for the inspections in 4.3.3, 4.3.4, and 4.3.5 shall be as specified in the contract or purchase order (see 6.2).

4.3.1 Component and material inspection. Components and materials shall be inspected in accordance with all the requirements of referenced documents unless otherwise excluded, amended, modified, or qualified in this specification or applicable purchase document.

4.3.2 In-process inspection. Inspection of subassemblies shall be made to ascertain that construction details and dimensional requirements which cannot be examined in the finished product are in accordance with specified requirements. The Government reserves the right to exclude from consideration for acceptance, any material or service for which in-process inspection has indicated nonconformance.

4.3.3 End item visual examination.

MIL-DTL-43649C (GL)

4.3.3.1 Canopy. The canopies shall be examined for the applicable defects listed in table I. Each noncompliance shall be scored as a defect.

TABLE I. Canopy visual defects

Defect	Classification	
	Major	Minor
Cloth, webbing and tape:		
Any hole in cloth (except drill holes):		
1/4 inch diameter or less		201
More than 1/4 inch diameter	101	
Color not as specified		202
Not specified type or class	102	
Cut or tear in cloth:		
1/2 inch or less		203
More than 1/2 inch	103	
Smash	104	
Multiple floats	105	
Grease or oil stain over 3/4 sq. inch	106	
Grease or oil stain(s) less than 3/4 sq. inch area:		
Not more than 5 per gore or 15 per canopy		204
More than 5 per gore or 15 per canopy	107	
Embedded crease or wrinkle in excess of 1/2 inch width	108	
Darns, over 14 per canopy	109	
Patches:		
More than one per canopy		110
Patch size exceeding 7 inches by 7 inches	111	
Location not as specified		112
Shape not as specified		113
Procedure, not as specified in 3.3.4		114
Cord and thread:		
Not specified type or size as applicable	115	
Color not as specified		205

MIL-DTL-43649C (GL)

TABLE I. Canopy visual defects (contd)

Defect		Classification Major
Minor		
Cloth, webbing and tape:		
Vent reinforcement overlap, does not span two main seams	116	
Vent reinforcement band, improper assembly	117	
Vent line length (across vent) not as specified:		
Less than 1/4 inch	118	
1/4 inch or more		206
Twisted vent line:		
More than 360°		207
More than 360°, causing kinks in line	119	
Gore width at vent, measured C/L to C/L on adjacent radial seams, not as specified:		
Less than 1/4 inch		208
1/4 inch or more	120	
Slot width, not as specified:		
Less than 1/8 inch		209
1/8 inch or more	121	
Skirt reinforcement band improperly assembled	122	
Under fold (raw edge) skirt hem	123	
NOTE: When a raw edge is the result of overfolding the edge extending more than 1/2 inch but less than 1 inch, the raw edge may be trimmed and will not be scored as a defect. If the condition extends more than 1 inch from the inside edge of the skirt hem, the stitching will be removed and the hem refolded and restitched.		
Tucks, wherein section of gore fabric is caught in stitching of hems	124	

MIL-DTL-43649C (GL)

TABLE I. Canopy visual defects(contd)

Defect	Classification	
	Major	Minor
Suspension lines crossed	125	
Cut, frayed, or damaged suspension or vent lines	126	
Cloth, webbing and tape:		
Suspension line length, not as specified:		
Less than 3/4 inch		210
3/4 inch or more	127	
Suspension line twisted:		
More than 360°		211
More than 360°, causing kinks	128	
Stitches and stitching:		
Wrong type	129	
Two or more stitches per inch less than specified	130	
Two or more stitches per inch more than specified		212
Broken, skipped or missing stitches not overstitched as specified	131	
Open seam	132	
NOTE: A seam shall be classified as open when one or more stitches joining a seam are broken or where two or more skipped stitches occur. Repairs of open seams will not be scored as defects.		
Wrong type seam	133	
Missing or incomplete stitch pattern	134	
Runoff not restitched in accordance with specified pattern		213
Zigzag stitching not sewn through suspension lines	135	
Tension loose, resulting in loose top or bobbin thread; or tight tension, resulting in tightness or puckering of material		214
Thread ends not trimmed		215
Ends of stitching not secured as specified		216

MIL-DTL-43649C (GL)

TABLE I. Canopy visual defects(contd)

Defect	Classification	
	Major	Minor
Stitch pattern lengths:		
Less than 1/8 inch minus	136	
1/8 inch or more minus		217
1/2 inch or more plus		218
Stitch pattern not complete	137	
Needle or feed dog damage	138	
Length of components and location dimensions not otherwise covered, not as specified:		
Up to 5 inches:		
Less than 1/8 inch		219
1/8 inch or more	139	
5 inches or over:		
Less than 1/4 inch		220
1/4 inch or more	140	
Riser:		
Length overall, not as specified by:		
Less than 1/2 inch		221
1/2 inch or more	141	
Loop length, not as specified by:		
Less than 1/8 inch		222
1/8 inch or more	142	
Insertion of suspension line in core at skirt attachment loop and riser attachment point not as specified by:		
Less than 1/4 inch		223
1/4 inch to 1/2 inch	143	
More than 1/2 inch plus		224
Ends of webbing and tape not seared as specified		225
Suspension line attachment loop length at skirt band not as specified by:		
Less than 1/8 inch		226
1/8 inch or more	144	

MIL-DTL-43649C (GL)

TABLE I. Canopy visual defects(contd)

Defect	Classification	
	Major	Minor
Any component missing	145	
Any incomplete assembly	146	
Identification marking illegible, incomplete, or missing		227
Clevis:		
Component missing	147	
Part fractured, malformed, or damaged	148	
Corrosion or rust	149	

4.3.3.2 Deployment bag. The deployment bags shall be examined for the applicable defects listed in table II. Each noncompliance shall be scored as a defect.

TABLE II. Deployment bag visual defects

Defect	Classification	
	Major	Minor
Cloth, webbing and tape:		
Any hole in cloth (except drill holes):		
1/4 inch diameter or less		201
More than 1/4 inch diameter	101	
Color not as specified		202
Not specified type or class	102	
Cut or tear in cloth:		
1/2 inch or less		203
More than 1/2 inch	103	
Darns, over 4 per bag	104	
Thread:		
Not specified type or size	105	
Color not as specified		204

MIL-DTL-43649C (GL)

TABLE II. Deployment bag visual defects (contd)

Defect	Classification	
	Major	Minor
Finished dimensions, body and flap (prior to assembly):		
Less than 1/4 inch less than specified		205
1/4 inch or more less than specified	106	
More than 1/2 inch more than specified		206
Stitches and stitchings:		
Wrong type	107	
Two or more stitches per inch less than specified	108	
Two or more stitches per inch more than specified		207
Broken, skipped, or missing stitches not overstitched as specified	109	
Open seam	110	
NOTE: A seam shall be classified as open when one or more stitches joining a seam are broken or where two or more skipped stitches occur. Repairs of open seams will not be scored as defects.		
Runoff not restitched in accordance with specified pattern		208
Tension loose, resulting in exposed top or bobbin thread, or		
tight tension, resulting in tightness or puckering of material		209
Ends of stitching not secured as specified		210
Stitch pattern lengths not as specified by:		
Less than 1/8 inch		211
1/8 inch or more	111	
Thread ends not trimmed		212
Stitch pattern not complete	112	
Needle or feed dog damage	113	
Length of components and location dimensions, not otherwise covered, not as specified:		
Up to 5 inches:		
Less than 1/8 inch		213
1/8 inch or more	114	

MIL-DTL-43649C (GL)

TABLE II. Deployment bag visual defects (contd)

Defect	Classification	
	Major	Minor
Less than 1/4 inch		214
1/4 inch or more	115	
Partial assembly or any component missing	116	
Misassembly	117	
Marking illegible, incorrect or missing		215

4.3.3.3 Pack. The packs shall be examined for the applicable defects listed in table III. Each noncompliance shall be scored as a defect.

TABLE III. Pack visual defects

Defect	Classification	
	Major	Minor
Cloth, webbing and tape:		
Any hole in cloth (except drill holes):		
1/4 inch diameter or less		201
More than 1/4 inch diameter	101	
Color not as specified		202
Not specified type or class	102	
Cut or tear in cloth:		
1/2 inch or less		203
More than 1/2 inch	103	
Darns, over 4 per pack	104	
Thread:		
Not specified type or size	105	
Color not as specified		204

MIL-DTL-43649C (GL)

TABLE III. Pack visual defects (Contd)

Defect	Classification	
	Major	Minor
Finished dimensions of panel assemblies (prior to assembly):		
Less than 1/4 inch less than specified		205
1/4 inch or more less than specified	106	
More than 1/2 inch more than specified		206
Stitches and stitchings:		
Wrong type	107	
Two or more stitches per inch less than specified		207
Two or more stitches per inch more than specified	108	
Broken, skipped, or missing stitches not overstitched as specified	109	
Open seam	110	
NOTE: A seam shall be classified as open when one or more stitches joining a seam are broken or where two or more skipped stitches occur. Repairs of open seams will not be scored as defects.		
Runoff not restitched in accordance with specified pattern		208
Tension loose, resulting in exposed top or bobbin thread		
or tight tension, resulting in tightness or puckering of material		209
Ends of stitching not secured as specified		210
Stitch pattern lengths not as specified by:		
Less than 1/8 inch		211
1/8 inch or more	111	
Thread ends not trimmed		212
Missing or incomplete stitch pattern	112	
Needle or feed dog damage	113	
Length of components and location dimensions, not otherwise covered, not as specified:		

MIL-DTL-43649C (GL)

TABLE III. Pack visual defects (contd)

Defect	Classification	
	Major	Minor
Up to 5 inches:		
Less than 1/8 inch		213
1/8 inch or more	114	
5 inches or more:		
Less than 1/4 inch		214
1/4 inch or more	115	
Partial assembly or any component missing	116	
Misassembly	117	
Marking illegible, incorrect, or missing		215

4.3.3.4 Static line. The static line shall be examined for the applicable defects listed in table IV. Each noncompliance shall be scored as a defect.

TABLE IV. Static line visual defects

Defect	Classification	
	Major	Minor
Webbing:		
Any hole, cut, tear or abrasion	101	
Not specified type or class		201
Color not as specified	102	
Length of static line not as specified by:		
Up to 1/2 inch		202
1/2 inch or more	103	
Loop length:		
Up to 1/4 inch less than specified		203
1/4 inch or more less than specified	104	
More than 1/4 inch more than specified		204
Component missing	105	

MIL-DTL-43649C (GL)

TABLE IV. Static line visual defects (contd)

Defect	Classification	
	Major	Minor
Stitching:		
Wrong type	106	
Missing or incomplete stitch pattern	107	
Runoff not restitched in accordance with specified stitch pattern		205
Tension loose, resulting in loose top or bobbin thread, or tight tension, resulting in tightness or puckering of material		206
Ends of stitching not secured as specified		207
Broken, skipped, or missing stitches not overstitched as specified	108	
Open seam	109	
NOTE: A seam shall be classified as open when one or more stitches joining a seam are broken or where two or more skipped stitches occur. Repairs of open seams will not be scored as defects.		
Stitch pattern lengths not as specified by:		
Less than 1/8 inch		208
1/8 to 1/4 inch	110	
1/4 inch or more plus		209
Thread ends not trimmed		210
Ends of webbing not seared		211
Thread:		
Not specified type or size	111	
Color not as specified		212
Identification marking illegible, missing or incorrect	213	
Clevis:		
Component missing	112	
Any part fractured, malformed, or damaged	113	

4.3.3.5 Drogue. The drogues shall be examined for the applicable defects listed in Table V. Each noncompliance shall be scored as a defect.

MIL-DTL-43649C (GL)

TABLE V. Drogue visual defects

Examine	Defect	Classification	
		Major	Minor
Material	Wrong color		201
	Not specified type or class		202
Design	Any characteristic not in accordance with specified requirement	101	
Construction and assembly	Any component missing, or not assembled or joined as specified	102	
Cleanness	Grease, dirt, oil, or other foreign matter		203
Seams	Open seam	103	
	Open seam overstitched less than 1 inch		204
NOTE: A seam shall be classified as open whenever breaks, runoffs, or two or more consecutive skips occur in stitching and are not over-stitched or restitched as specified.			
Stitches and stitching	Not type of stitch specified	104	
	Ends of stitching not secured as specified (except where turned under in a hem or held down by other stitching)		205
Stitches and stitching (contd)	One stitch per inch less than minimum specified		206
	Two or more stitches per inch less than minimum specified	105	
	One or more stitches per inch in excess of maximum specified		207
	Loose tension, resulting in loose top or bobbin thread; or tight tension resulting in tightness or puckering of material at stitch line		208
	Thread ends not trimmed		209
	Any row of stitching missing	106	
	Needle chews	107	
	Stitching pattern not complete	108	
	Stitch margin or gage not as specified		210
	Stitching run off at edge cutting material	109	

MIL-DTL-43649C (GL)

TABLE V. Drogue visual defects (contd)

Defect		Classification	
		Major	Minor
Nylon cloth and tape	Holes, tears, or cuts	110	
	Abrasion or thin material	111	
Nylon cord	Cut, tear, or break	112	
	Abrasion or seared area (except on ends of cord)	113	
	Any splice or not continuous		211
	Ends not seared		212
Identification marking	Missing, illegible, incorrect, wrong color or location, or not applied as specified		213

4.3.4 End item dimensional examination. The end items (complete parachute assemblies or separate components, as applicable) shall be examined for conformance to the dimensions specified on the drawings. Only those dimensions that can be evaluated without damaging or disassembling the end items shall be examined. Each noncompliance shall be scored as a defect.

4.3.5 End item testing. The completely fabricated canopy shall be tested as specified in 4.4.1 for conformance to the air permeability requirement of 3.3.2.

4.4 Methods of inspection.

4.4.1 Canopy permeability test. The canopy permeability shall be determined in accordance with Method 5450 of FED-STD-191, except that three permeability readings shall be taken at widely separated points in each of the alternate gores around the canopy, and the average of the results determined. Failure of the canopy to meet the requirement in 3.3.2 shall constitute failure of the test.

5. PACKAGING

5.1 Packaging. For acquisition purposes, the packaging requirements shall be as specified in the contract or order (see 6.2). When actual packaging of materiel is to be performed by DoD personnel, these personnel need to contact the responsible packaging activity to ascertain requisite packaging requirements. Packaging requirements are maintained by the Inventory Control Point's packaging activity within the Military Department or Defense Agency, or within the Military Department's System Command. Packaging data retrieval is available from the managing Military Department's or Defense Agency's automated packaging files, CD-ROM products, or by contacting the responsible packaging activity.

MIL-DTL-43649C (GL)

6. NOTES

(This section contains information of a general or explanatory nature which may be helpful, but is not mandatory).

6.1 Intended use. The 12-foot and 26-foot diameter parachutes are intended for use in air-dropping non-fragile cargo at high rates of descent. The 34-foot diameter parachute is intended for use in air-dropping cargo at normal rates of descent.

6.2 Acquisition requirements. Acquisition documents must specify the following:

- a. Title, number and date of this specification
- b. Size parachute required (see 1.2.1)
- c. Parachute component(s) required, when procured separately (see 1.2.2)
- d. When a first article is required (see 3.1 and 4.2)
- e. Sampling plan, lot size and sample size (see 4.2 and 4.3)
- f. Packaging requirements (see 5.1)

6.3 Subject term (key word) listing.

Airdrop	Deployment bag
Canopy	Pack
Drogue	Static line

6.4 Changes from previous issue. Marginal notations are not used in this revision to identify changes with respect to the previous issue due to the extent of the changes.

Custodian:
Army - GL

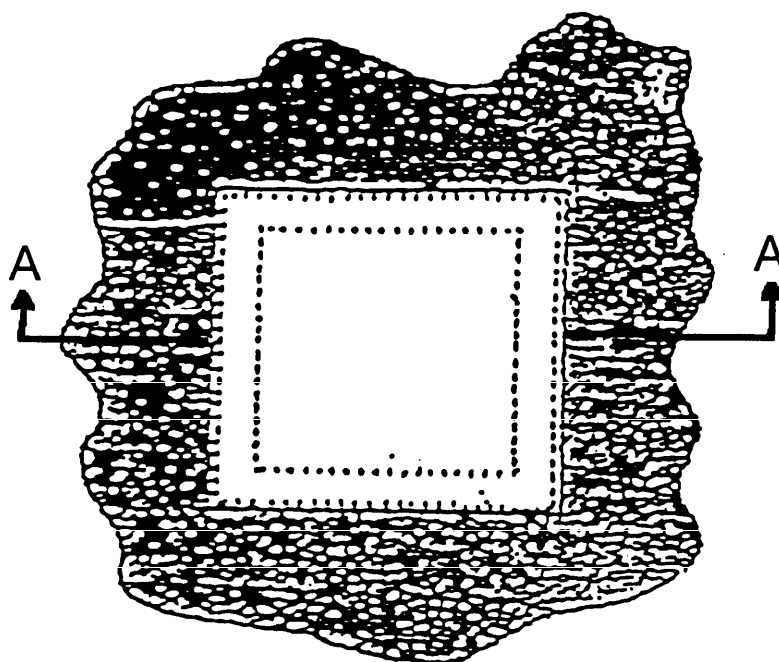
Preparing activity:
Army - GL

Review activity
Army - AV

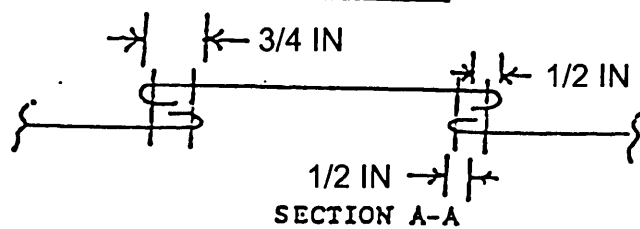
(Project 1670-A887)

FIGURE 1. Sewn patch application to solid parachute canopy - cargo

MIL-DTL-43649C (GL)

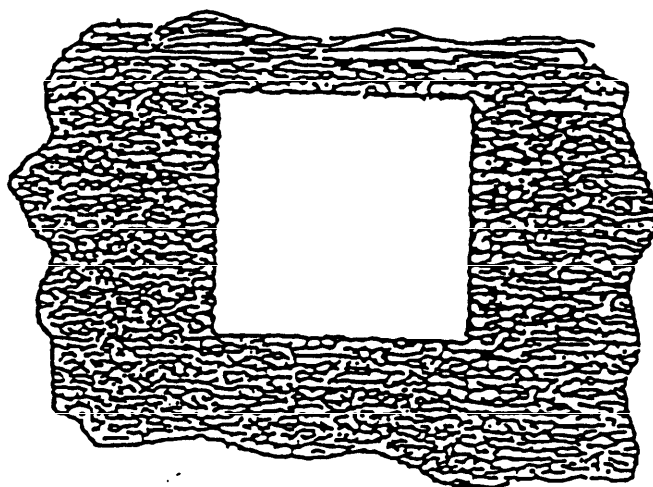


INSIDE VIEW



ALL STITCHING SHALL BE
1/8 INCH FROM EDGE

TOLERENCE: $\pm 1/16$ IN



OUTSIDE VIEW

STANDARDIZATION DOCUMENT IMPROVEMENT PROPOSAL

INSTRUCTIONS

1. The preparing activity must complete blocks 1, 2, 3, and 8. In block 1, both the document number and revision letter should be given.

2. The submitter of this form must complete blocks 4, 5, 6, and 7.

3. The preparing activity must provide a reply within 30 days from receipt of the form.

NOTE: This form may not be used to request copies of documents, nor to request waivers, or clarification of requirements on current contracts. Comments submitted on this form do not constitute or imply authorization to waive any portion of the referenced document(s) or to amend contractual requirements.

1. NATURE OF CHANGE

1. DOCUMENT NUMBER

MIL-DTL-43649C (GL)

2. DOCUMENT DATE (YYMMDD)

97-06-25

3. DOCUMENT TITLE Parachutes, Cargo, 12, 26, and 34 Foot Diameter

4. NATURE OF CHANGE (Identify paragraph number and include proposed rewrite, if possible. Attach extra sheets as needed.)

5. REASON FOR RECOMMENDATION

a. NAME

U.S. Army Natick RD&E Center

b. TELEPHONE (Include Area Code)

(1) Commercial
508-233-5175

(2) AUTOVON
256-5175

c. ADDRESS (Include Zip Code)

Commander, U.S. Army Natick RD&E Center
Attn: SSCNC-WEF
Natick, MA 01760-5018

IF YOU DO NOT RECEIVE A REPLY WITHIN 45 DAYS, CONTACT:

Defense Quality and Standardization Office
5203 Leesburg Pike, Suite 1403, Falls Church, VA 22041-3466
Telephone (703) 756-2340 AUTOVON 289-2340