

INCH-POUND
 MIL-DTL-2726/73C
 31 August 2005
 SUPERSEDING
 MIL-R-2726/73B(SH)
 3 July 1986

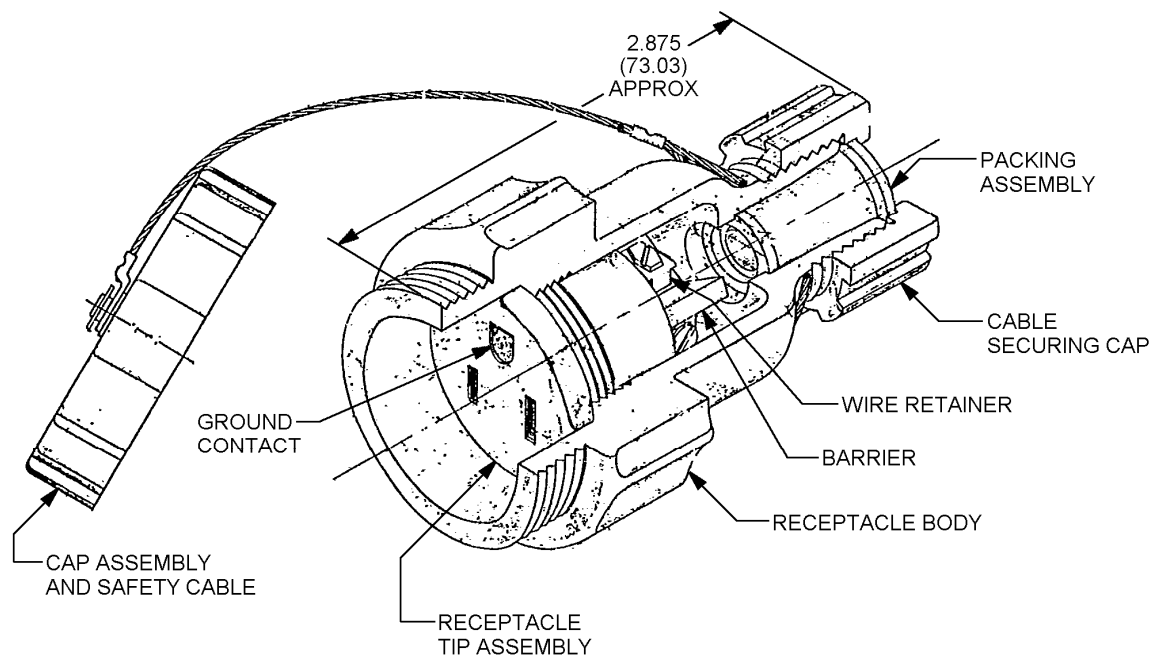
DETAIL SPECIFICATION SHEET

RECEPTACLE, ELECTRICAL, 15-AMPERE, 125-VOLT, BLADED TYPE,
 GROUNDED (PORTABLE) (SYMBOL NO. 1215)

Inactive for new design after 28 June 1999.

This specification is approved for use by all
 Departments and Agencies of the Department of Defense.

The requirements for acquiring the product described herein shall consist of this
 specification sheet and MIL-DTL-2726.



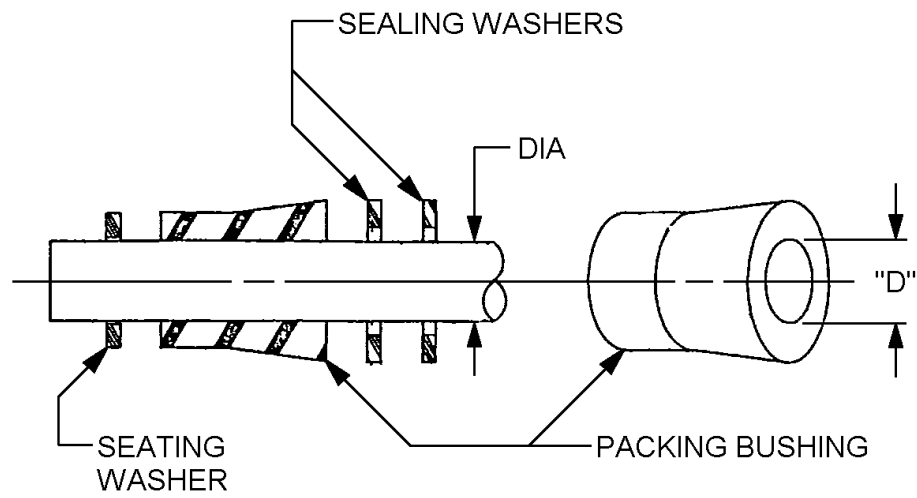
SH 10421

NOTES:

1. Dimensions are in inches.
2. Metric equivalents are in parentheses and given for information only.
3. Unless otherwise specified, tolerances are $\pm .016$ (0.41mm) and $\pm 0^{\circ}30'$ on angles.

FIGURE 1. Receptacle assembly.

MIL-DTL-2726/73C



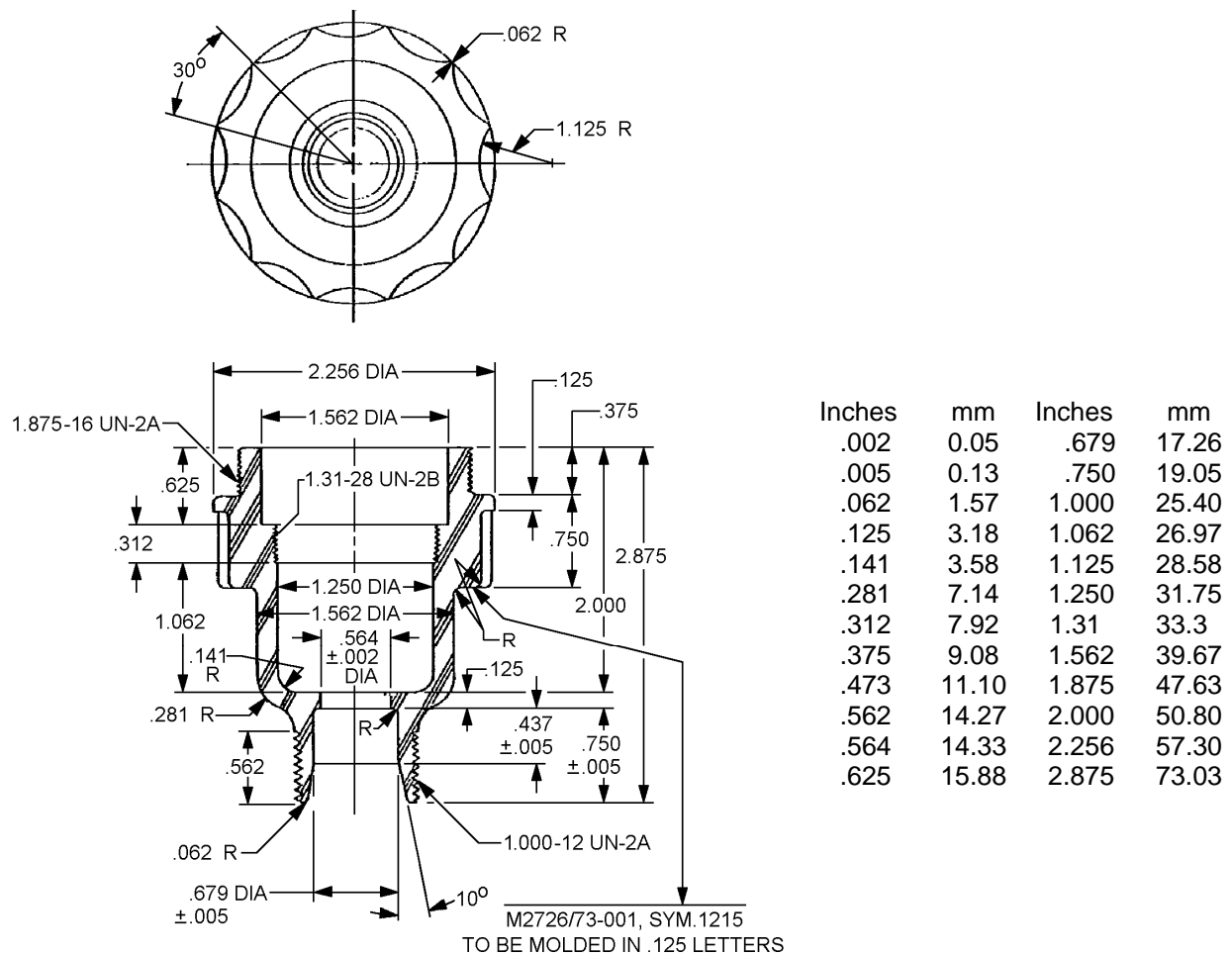
SH 10423

SELECT PACKING ASSEMBLY TO SUIT CABLE DIAMETER

| CABLE DIA | BUSHING "D" DIA | PACKING ASSY Part or Identifying Number (PIN). |
|-----------------------------|--------------------|---|
| .400 - .440 (11.16)-(11.18) | .415 (10.54) | M2726/50-004-1 |
| .440 - .520 (11.18)-(13.20) | .470 (11.94) | M2726/50-004-2 |
| .520 - .560 (13.20)-(14.23) | .550 (13.97) | M2726-50-004-3 |

FIGURE 2. Instruction sheet.

MIL-DTL-2726/73C

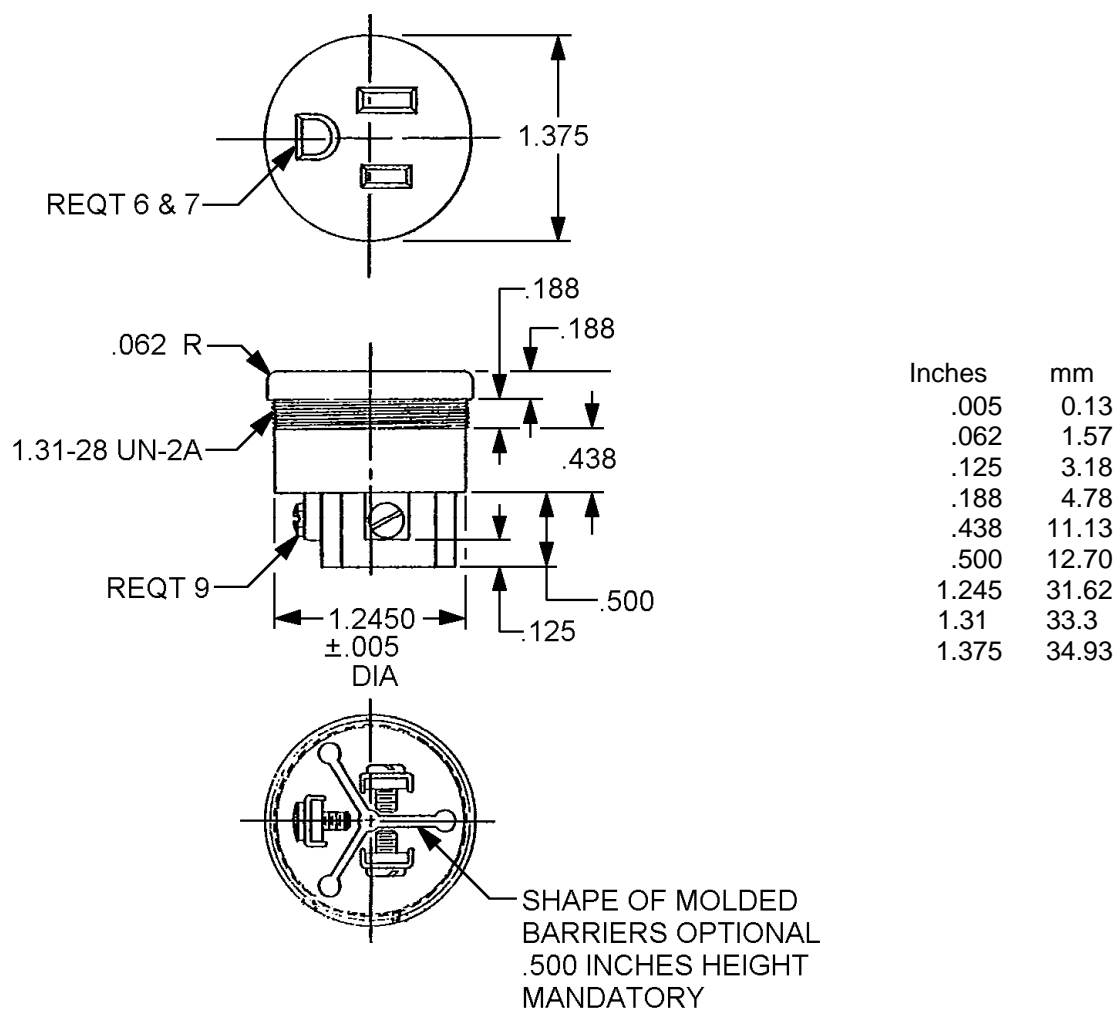


NOTES:

1. Dimensions are in inches.
2. Metric equivalents are given for information only.
3. Unless otherwise specified, tolerances are $\pm .016$ (0.41mm) and $\pm 0^\circ 30'$ on angles.

FIGURE 3. Receptacle body.

MIL-DTL-2726/73C

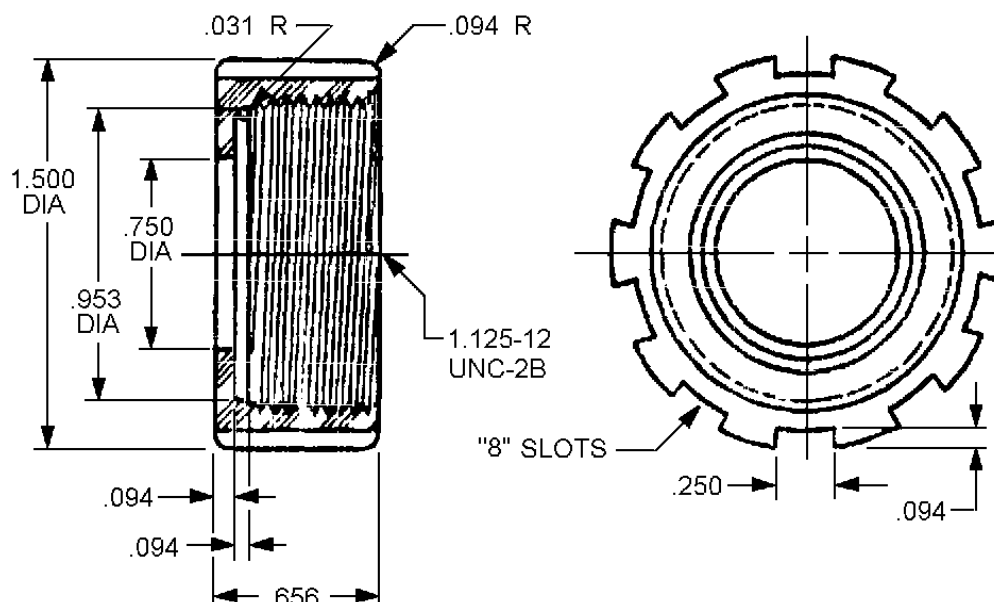


NOTES:

1. Dimensions are in inches.
2. Metric equivalents are given for information only.
3. Unless otherwise specified, tolerances are $\pm .016$ (0.41mm) and $\pm 0^{\circ}30'$ on angles.

FIGURE 4. Receptacle tip assembly.

MIL-DTL-2726/73C



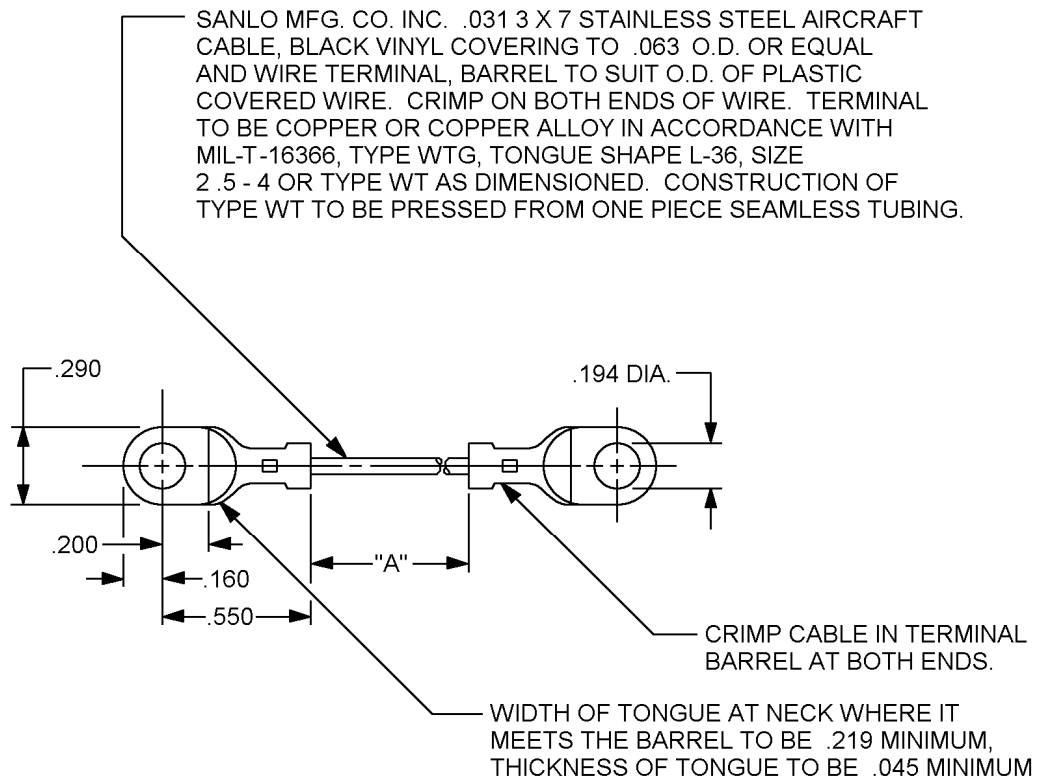
| Inches | mm |
|--------|-------|
| .031 | 0.79 |
| .093 | 2.36 |
| .094 | 2.39 |
| .250 | 6.35 |
| .626 | 15.90 |
| .656 | 16.66 |
| .812 | 20.62 |
| 1.000 | 25.40 |
| 1.375 | 34.93 |

NOTES:

1. Dimensions are in inches.
2. Metric equivalents are given for information only.
3. Unless otherwise specified, tolerances are $\pm .010$ (0.25mm) per linear inch, whichever is greater.
4. Angular dimensions are $\pm 0^{\circ}30'$.
5. Threads as specified in FED-STD-H28/2.
6. Marking PIN: M19622/10-0002 tube size and manufacturer's logo or name in .125 inch high raised letters on face of cup (see MIL-S-19622).

FIGURE 5. Cable securing cap.

MIL-DTL-2726/73C



| Inches | mm |
|--------|-------|
| .031 | 0.79 |
| .045 | 1.79 |
| .063 | 1.60 |
| .160 | 4.06 |
| .194 | 4.93 |
| .200 | 5.08 |
| .219 | 5.56 |
| .290 | 7.37 |
| .550 | 13.97 |

NOTES:

1. Dimensions are in inches.
2. Metric equivalents are given for information only.
3. Cable length "A" may be 6 inches or 10 inches.

FIGURE 6. Cable assembly.

MIL-DTL-2726/73C

REQUIREMENTS

Dimensions and configurations: See figures 1 through 6.

Effectiveness of enclosure: Watertight in accordance with MIL-STD-108.

Strain relief: 30 pounds.

Material: Receptacle body and end cap shall be molded polycarbonate (yellow) in accordance with ASTM-D3935. Receptacle tip assembly (contact insulation) shall be polycarbonate (yellow) or type MAI-60 (yellow) in accordance with ASTM-D5948. Contact material shall be phosphor bronze in accordance with ASTM-B139.

Receptacle: Contact arrangement shall conform to W-C-596/11, PIN: WC596/11-1.
The ground contact shall be nickel-plated, 0.0003 inch thick.

Cable securing cap: See figure 5, PIN M19622/10-0002, except color shall be yellow and material may be polycarbonate, if desired.

Terminals: Shall be furnished with wire retainers and binding head screws. Ground screw shall be hexagonal head and shall be finished in a distinctive green color. Ground contact shall be nickel-plated.

Packing assemblies: MIL-DTL-2726/50, PIN M2726/50-004-1, M2726/50-004-2, M2726/50-004-3 shall be furnished with the receptacle assembly. User shall select size that most nearly fits the cable as shown on figure 2.

Mating plug: MIL-DTL-2726/38, PIN M2726/38-001 (not furnished).

Test cables: Type C0-03H0F (3/16) in accordance with MIL-DTL-3432 – use with M2726/50-004-1
MIL-DTL-24643 and MIL-DTL-24643/3 – use with M2726/50-004-2
Type C0-03H0F (3/14) in accordance with MIL-DTL-3432 – use with
M2726/50-004-3.

Design: Receptacle tip assembly shall be threaded into receptacle body. Barriers shall be molded integral with receptacle tip and shall extend .125 inch minimum above the electrical contacts. End of receptacle body shall be flat for effective watertight seal against gasket of mating receptacle plug.

Instruction sheet: An instruction sheet with the information shown on figure 2 shall be furnished with each receptacle on paper 4 by 6 inches.

Safety cable: See figure 6, MS17339 PIN MS17339-2, looped around neck of receptacle body and crimped to prevent removal.

Cap assembly: In accordance with MIL-DTL-2726/37.

Intended use: Shipboard, on weather decks or in high moisture environments below decks, for maintaining watertight seal when used in a cable extension assembly with plug connector, M2726/38-001 in accordance with MIL-DTL-2726/38.

Electrical rating: 15-amperes, 125-volts, alternating current, 60-hertz.

MIL-DTL-2726/73C

Tests: The shock and vibration tests required by MIL-DTL-2726 are not required for the receptacle covered by this specification.

PIN: M2726/73-001.

VERIFICATION

Verification shall be as specified in MIL-DTL -2726 and table I herein. The first article and conformance inspections shall consist of the inspections as specified in table I, in the order shown.

TABLE I. First article and conformance inspection.

| Inspection | First article | Conformance |
|---------------------------------|---------------|-------------|
| Examination | X | X |
| Insulation resistance | X | X |
| Dielectric withstanding voltage | X | X |
| Contact resistance | X | X |
| Endurance | X | |
| Salt spray | X | |
| Contact resistance | X | |
| Current load | X | |
| Vibration | X | |
| Shock | X | |
| Effectiveness of enclosure | X | X |
| Dielectric withstanding voltage | X | |
| Rockwell hardness | X | |

Marginal notations are not used in this revision to identify changes with respect to the previous issue due to the extensiveness of the changes.

Referenced documents. In addition to MIL-DTL-2726, this document references the following:

ASTM-B139
 ASTM-D3935
 ASTM-D5948
 FED-STD-H28/2
 MIL-DTL-24643
 MIL-DTL-24643/3
 MIL-DTL-2726/37
 MIL-DTL-2726/38
 MIL-DTL-2726/50
 MIL-DTL-3432
 MIL-S-19622
 MIL-STD-108
 MS17339
 MIL-T-16366
 W-C-596/11

MIL-DTL-2726/73C

CONCLUDING MATERIAL

Custodians:

Army - CR
DLA - CC
Navy - SH

Preparing activity:
DLA - CC

(Project 5935-4764-000)

Review activities:

Army - AV, MI

NOTE: The activities listed above were interested in this document as of the date of this document. Since organizations and responsibilities can change, you should verify the currency of the information above using the ASSIST Online database at <http://assist.daps.dla.mil>.