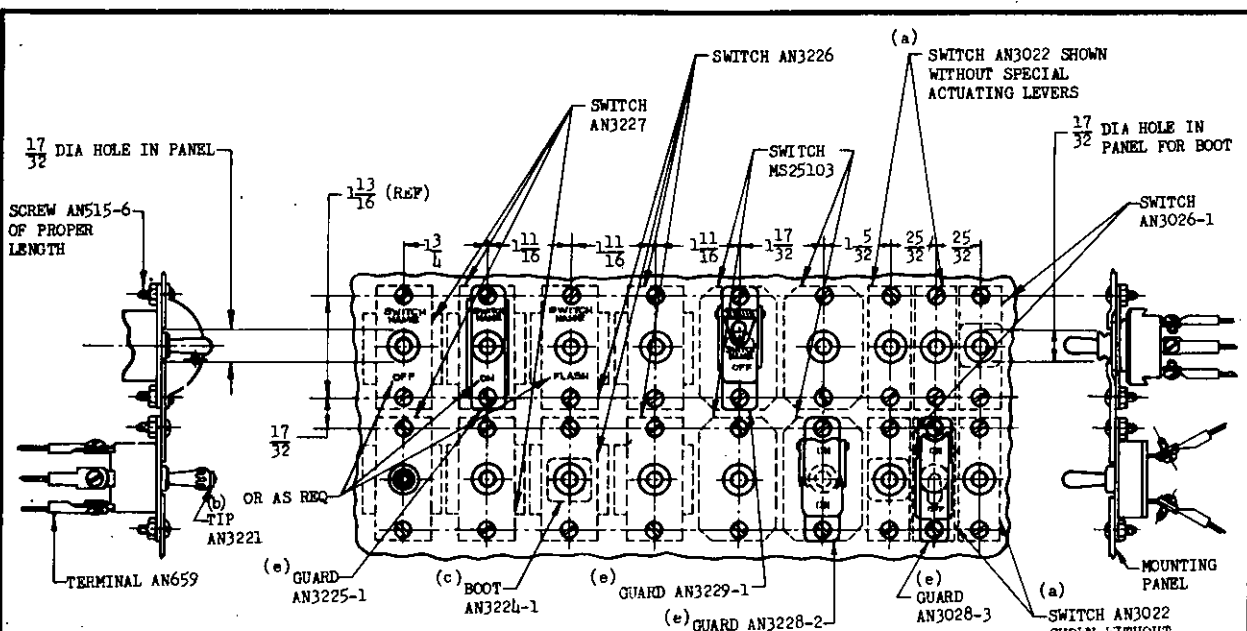
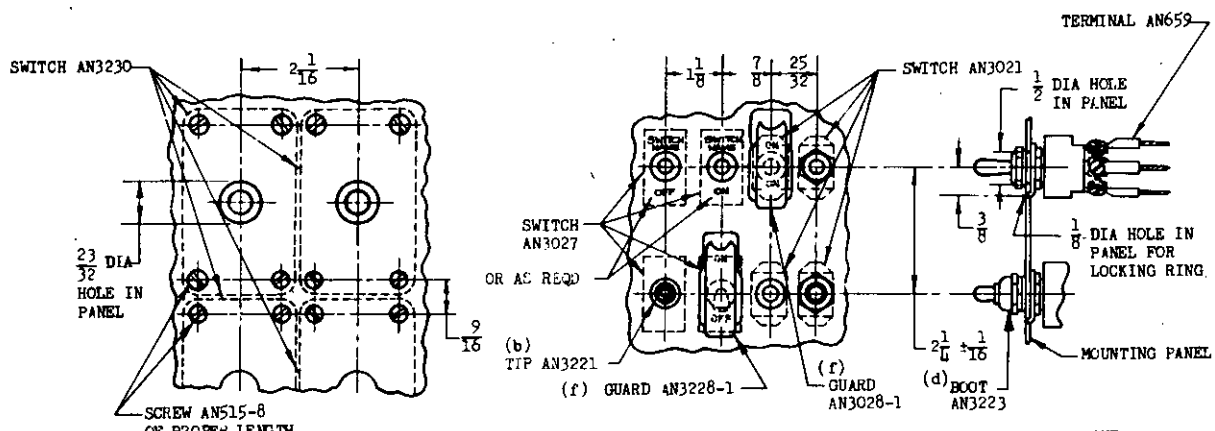


NOTICE: When Government drawings, specifications, or other data are used for any purpose other than in connection with a definitely related Government procurement operation, the United States Government thereby incurs no responsibility, nor any obligation whatsoever; and the fact that the Government may have furnished, furnished, or in any way supplied the said drawings, specifications, or other data is not to be regarded by implication or otherwise as in any manner endorsing the holder or any other person or organization, or conveying any rights or privileges in manufacture, sale, or use of any patented invention that may in any way be related thereto.

NOTE: This drawing was approved by joint action of the Air Force and Navy Departments as the Air Force-Navy standard for this problem. This drawing supersedes all unclassified drawings for the same problem and shall become obsolete for the procurement of replacement supplies, or for use in new designs, not later than 6 months after the latest date of approval above.



HORIZONTAL AND VERTICAL SPACING OF THREE-HOLE MOUNTING SWITCHES SHOWING METHOD OF MARKING



HORIZONTAL AND VERTICAL SPACING OF FIVE HOLE MOUNTING SWITCHES

HORIZONTAL AND VERTICAL SPACING OF ONE HOLE MOUNTING SWITCHES

- (a) FOR SPACING OF SWITCHES HAVING SPECIAL ACTUATING LEVERS REFER TO DRAWING AN3022 FOR WIDTHS OF LEVERS.
- (b) TIP AN3221 MAY BE USED WITH SWITCHES AN3022, AN3023, AN3026, AN3226, AN3227, AN3021 OR AN3027.
- (c) BOOT AN3224-2 MAY BE USED WITH SWITCHES AN3022, AN3023, AN3226 OR AN3227.
- (d) BOOT AN3223 MAY BE USED WITH SWITCHES AN3021 OR AN3027.
- (e) GUARDS AN3028-3, AN3228-2, AN3229-1 AND AN3225-1 MAY BE USED WITH SWITCHES AN3022, AN3023, AN3226 OR AN3227.
- (f) GUARDS AN3028-1 AND AN3228-1 MAY BE USED WITH SWITCHES AN3021 OR AN3027.

LETTERING ON THE PANELS OR NAMEPLATES SHALL BE RECESSED AND FILLED WITH WHITE ENAMEL CONFORMING TO SPECIFICATION MIL-E-5556. RECESSED LETTERING ACCOMPLISHED BY ENGRAVING OR CUTTING THROUGH THE BLACK LAYER OF LAMINATED PLASTICS TO EXPOSE A WHITE LAYER IS ACCEPTABLE. THE WORDING SHALL BE CLEARLY AND CONCISELY INDICATIVE OF FUNCTION. THE TYPE CHARACTERS SHALL CONFORM TO THE AIR FORCE -NAVY AERONAUTICAL DESIGN STANDARD FOR NUMERALS AND LETTERS AS SHOWN BY ANDIO400, OR MAY BE COMPRESSED COMMERCIAL GOTHIC. THE HEIGHT OF CHARACTERS SHALL BE 1/8 INCH.

REMOVE ALL ROUGH PROJECTIONS FROM HEADS OF SCREWS.
FOR DEFINITION AND APPLICATION OF DRAWING STATUS NOTES, SEE ANA BULLETIN NO.337.
ARRANGEMENT OF SWITCHES, GUARDS, ETC AS SHOWN ON THIS DRAWING IS NOT RESTRICTIVE.

DIMENSIONS IN INCHES. UNLESS OTHERWISE SPECIFIED, TOLERANCES: FRACTIONS ±1/64.

INACTIVE FOR DESIGN AFTER 7 OCTOBER 1957.
USE STANDARD MS33630

4 CANCELED AFTER 14 APRIL 1981. NO SUPERSEDING STANDARD

AIR FORCE-NAVY AERONAUTICAL DESIGN STANDARD

SWITCH - TOGGLE, INSTALLATION OF

ANDIO453

NOT A PART NUMBER
SUPERSEDES BUAER DRAWING R-104.

APPROVED 15 May 46 REVISION 1 18 NOV 57 2 6 Feb 52 3 7 Oct 57 4 14 APRIL 1981