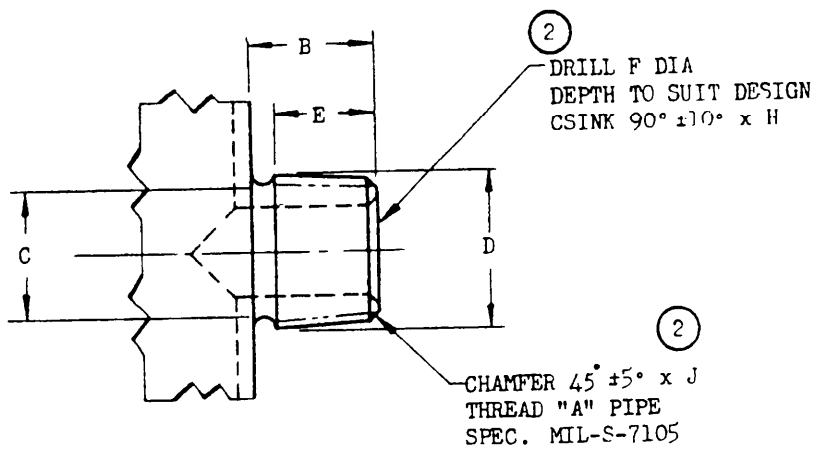


NOTICE: When Government drawings, specifications, or other data are used for any purpose other than in connection with a definitely related Government procurement operation, the United States Government assumes no responsibility for any obligation whatsoever; and the fact that the Government may have furnished, furnished, or supplied the said drawing, specification, or other data in no way constitutes an authorization, by implication or otherwise, for any other person or corporation, or conveying any rights or permission to manufacture, use, or sell any patented invention that may in any way be related thereto.

NOTE: This drawing was approved by the War and Navy Departments as the Army-Navy standard for this product. This drawing supersedes all antecedent standard drawings for the same product and will become effective for the production of parts by suppliers, or for use in new design, not later than the date shown. It may be put into effect at an earlier date after promulgation.



WALL THICKNESS MIN	THREAD A ANPT	B MIN	C MIN DIA	D MIN DIA	E MIN	F MAX DIA	H ±1/64 DIA	J ±1/64
.043	1/16	25/64	1/4	21/64	5/16	1/8	3/16	1/32
.050	1/8	25/64	3/8	27/64	5/16	13/64	1/4	1/32
.052	1/4	19/32	15/32	9/16	15/32	19/64	11/32	3/64
.057	3/8	39/64	5/8	11/16	15/32	27/64	15/32	3/64
.062	1/2	25/32	3/4	55/64	19/32	35/64	5/8	1/16
.068	3/4	51/64	31/32	1- 5/64	5/8	47/64	13/16	1/16
.080	1	63/64	1- 7/32	1-11/32	25/32	61/64	1- 1/32	5/64
.095	1-1/4	1	1- 9/16	1-11/16	25/32	1-17/64	1-11/32	5/64
.098	1-1/2	1- 1/32	1-13/16	1-59/64	13/16	1- 1/2	1-19/32	5/64
.115	2	1- 1/16	2- 9/32	2-13/32	27/32	1-15/16	2- 1/32	5/64
.137	2-1/2	1- 9/16	2-23/32	2-29/32	1- 9/32	2- 5/16	2-13/32	7/64
.152	3	1- 5/8	3-11/32	3-17/32	1-11/32	2-29/32	3	7/64

THE DIMENSIONS LISTED SHALL BE USED UNLESS OTHER FACTORS OF THE DESIGN DICTATE THE USE OF GREATER LENGTHS.

DIMENSIONS D AND E ARE FOR DIE AND PATTERN MAKER ONLY AND SHALL BE GIVEN ON DRAWINGS ONLY WHEN PORTION BETWEEN END OF THREAD AND BODY IS REDUCED BELOW THE OD OF THE THREAD MAKING IT NECESSARY FOR THE PATTERN OR DIE MAKER TO MAKE ALLOWANCE FOR THE THREAD.

ALLOWABLE BEVEL ON FACE OF BOSS NOT TO EXCEED 5 DEGREES.

2 BREAK ALL SHARP EDGES AND REMOVE ALL HANGING BURRS AND SLIVERS WHICH MIGHT BECOME DISLODGED UNDER USAGE.

DIMENSIONS IN INCHES.

AIR FORCE - NAVY AERONAUTICAL DESIGN STANDARD

BOSSSES - STANDARD DIMENSIONS FOR EXTERNAL PIPE THREAD

AND10052

NOT A PART NUMBER

APPROVED 5 Dec 40 REVISED 1 11 Jun 47 2 1 Jun 54