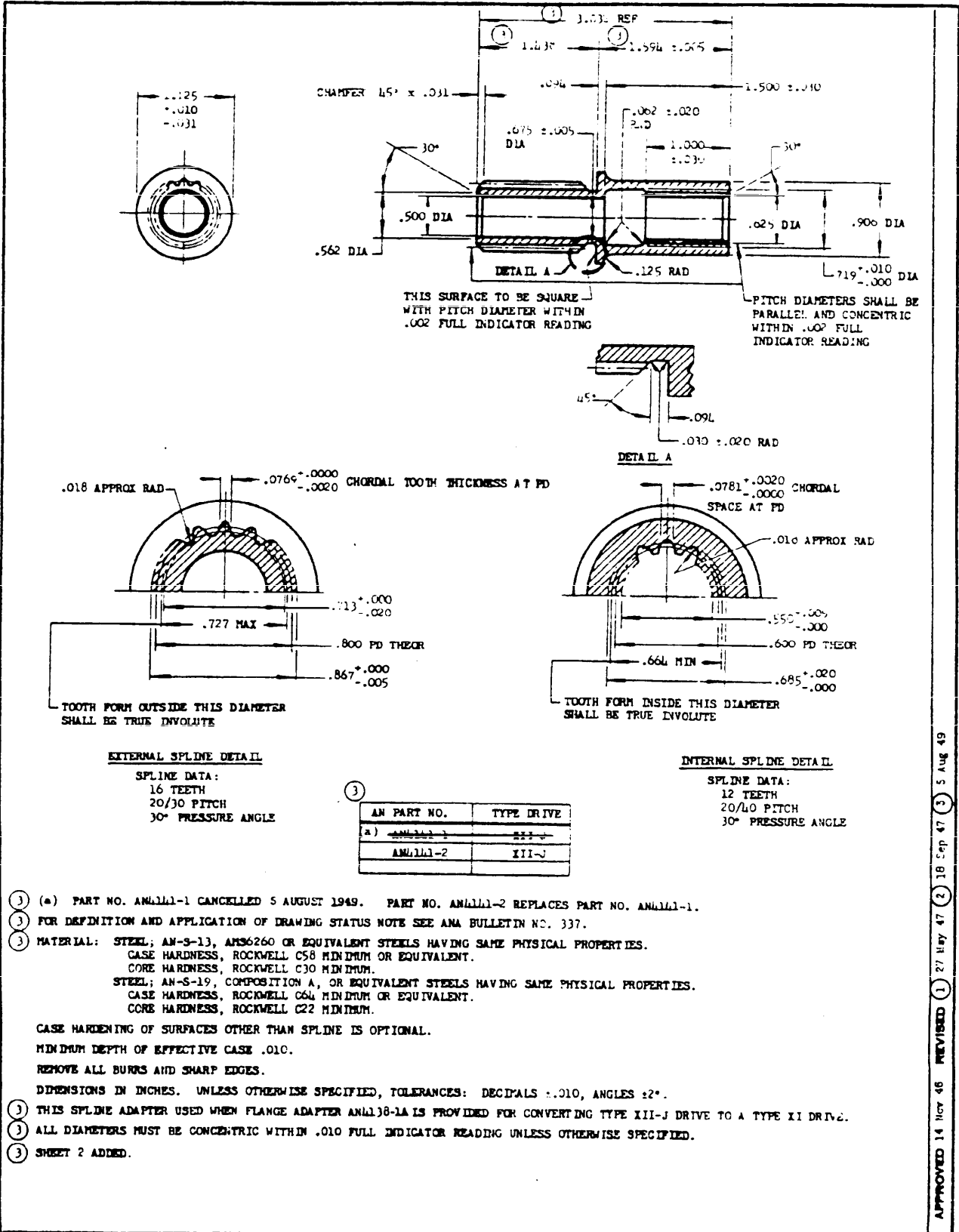


NOTICE: When Government drawings, specifications, or other data are used for any purpose other than in connection with a definitely related Government procurement operation, the United States Government thereby incurs no responsibility, nor any obligation, whether or not the Government may have furnished, furnished or may supply the said drawings, specifications, or other data to be regarded by the Government as in any manner constituting an endorsement, approval, or other form of support, or authorizing any person to manufacture, use, or sell any product or process that may in any way be related thereto.

NOTE: This drawing was approved by joint action of the Air Force and Navy Departments as the Air Force-Navy standard. This drawing represents all standard dimensions for the items specified and shall be used for the procurement of commercial supplies, or for use in new designs, all other than those shown on the latest data of approval shown.



- ① (*) PART NO. AN4141-1 CANCELLED 5 AUGUST 1949. PART NO. AN4141-2 REPLACES PART NO. AN4141-1.
- ② FOR DEFINITION AND APPLICATION OF DRAWING STATUS NOTE SEE ANA BULLETIN NO. 337.
- ③ MATERIAL: STEEL; AN-S-13, AMS6260 OR EQUIVALENT STEELS HAVING SAME PHYSICAL PROPERTIES.
 CASE HARDNESS, ROCKWELL C58 MINIMUM OR EQUIVALENT.
 CORE HARDNESS, ROCKWELL C30 MINIMUM.
 STEEL; AN-S-19, COMPOSITION A, OR EQUIVALENT STEELS HAVING SAME PHYSICAL PROPERTIES.
 CASE HARDNESS, ROCKWELL C64 MINIMUM OR EQUIVALENT.
 CORE HARDNESS, ROCKWELL C22 MINIMUM.
 CASE HARDENING OF SURFACES OTHER THAN SPLINE IS OPTIONAL.
 MINIMUM DEPTH OF EFFECTIVE CASE .010.
 REMOVE ALL BURRS AND SHARP EDGES.
 DIMENSIONS IN INCHES. UNLESS OTHERWISE SPECIFIED, TOLERANCES: DECIMALS ±.010, ANGLES ±2°.
- ④ THIS SPLINE ADAPTER USED WHEN FLANGE ADAPTER AN4138-1A IS PROVIDED FOR CONVERTING TYPE XII-J DRIVE TO A TYPE XI DRIVE.
- ⑤ ALL DIAMETERS MUST BE CONCENTRIC WITHIN .010 FULL INDICATOR READING UNLESS OTHERWISE SPECIFIED.
- ⑥ SHEET 2 ADDED.

APPROVED 14 May 46 REVISED ① 27 May 47 ② 18 Sep 47 ③ 5 Aug 49

